

Replacing your Craft Icemaker is very simple!

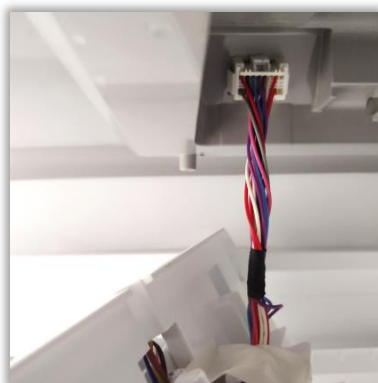
Only tool required is a #2 Phillips screwdriver.



- 1) With power removed from unit...Remove 2 screws that hold the craft icemaker assembly in place.



- 2) Unplug 1 wiring harness.



- 3) Install the new part.
(Plug in and reinstall the 2 screws)



For detailed Step-by-Step Instructions continue to next page.

How to Replace the Craft Icemaker in French Door Refrigerators



Tools Needed: #2 Phillips screwdriver.



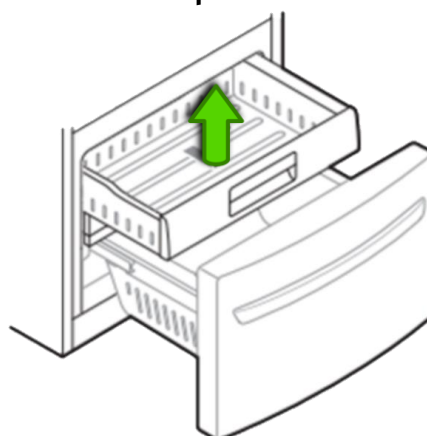
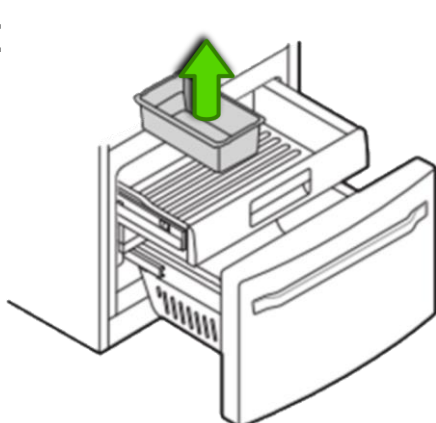
Step 1: Unplug the refrigerator from the wall.

Make sure power is disconnected from the refrigerator before continuing.



Step 2: Remove the Freezer bin and drawer.

Open the freezer door and remove the ice bin and the upper drawer from the unit. Pull toward you and up to remove the drawer:



Step 3: Locate the Craft Icemaker.

The Craft Icemaker is mounted to the ceiling of the freezer section on the left side. It is held in place with 2 Phillips head screws which will need to be removed first:



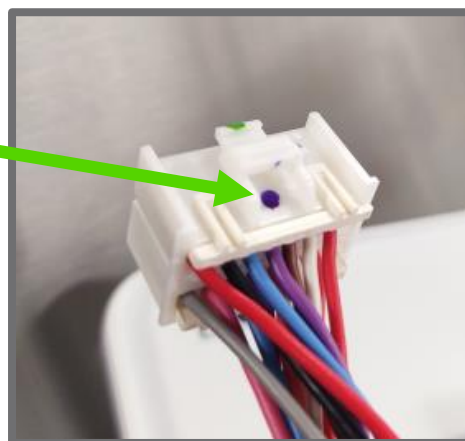
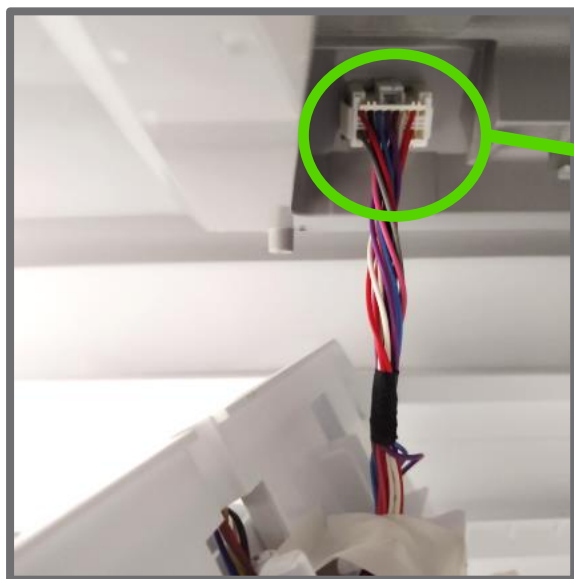
Step 4: Remove the Craft Icemaker.

After removing both screws pull the icemaker straight down from the front and once the front is loose pull the icemaker forward to uninstall from the rear mounts:



Step 5: Disconnect the Craft Icemaker.

There is only 1 wiring harness that will need to be disconnected. The release tab is located on top of the connector. Press down on the release tab and the harness can be disconnected:



Craft Icemaker Installation

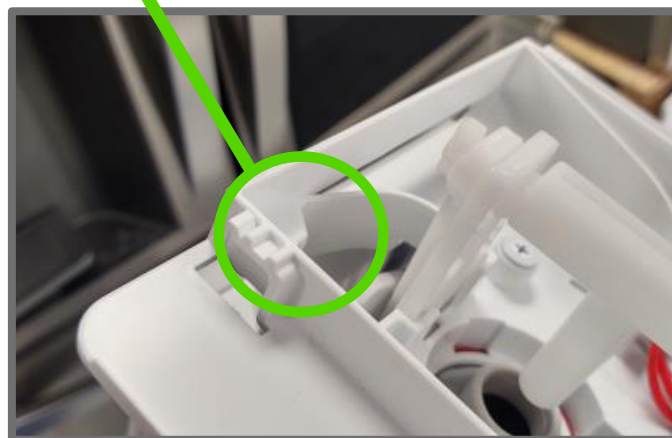
Step 1: Plug in the new Craft Icemaker

Start by plugging the new Craft Icemaker into the receptacle where you just unplugged the old icemaker. Be careful to line the connector up properly with the release tab on top. (If you have difficulty the freezer door may need to be removed and steps for that will be added to the end of this presentation):



Step 2: Mount the Icemaker.

Install the back of the Craft Icemaker onto the hangers. There is one on both sides of the icemaker at the back. To do this the icemaker will need to be held at an angle as shown below:



Step 3: Reinstall Two Screws

Push the front of the icemaker up flush with the freezer liner and reinstall the 2 screws that were removed earlier:



Step 4: Power Icemaker On

Plug the refrigerator back in or turn on breaker, Make sure the icemaker power switch is in the "ON" position:

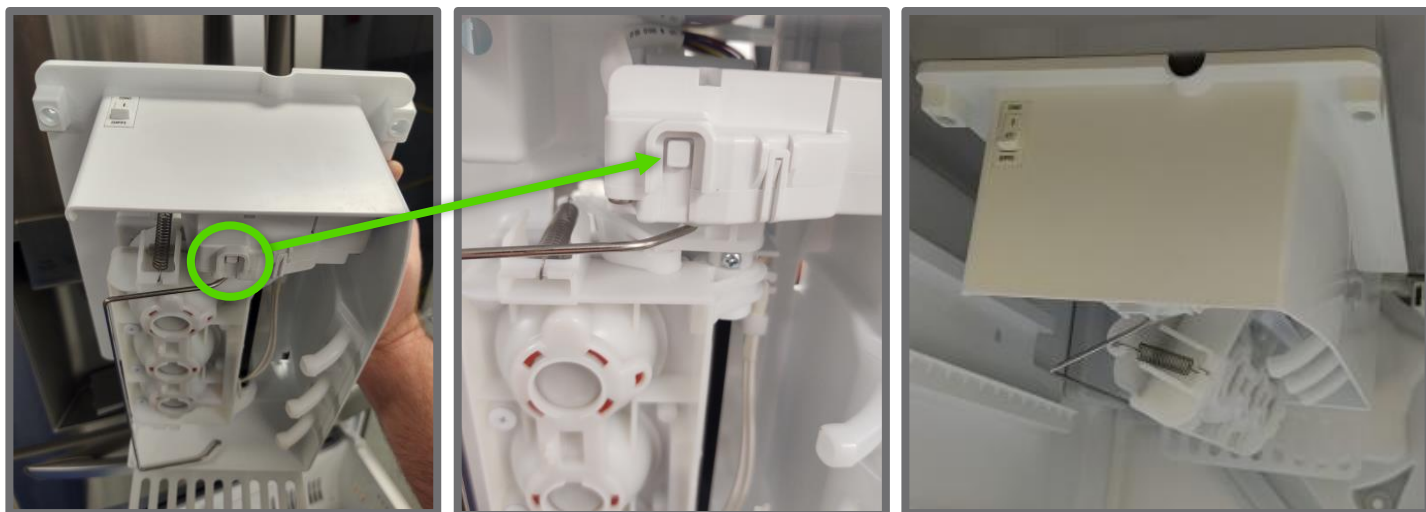


Step 5: Reinstall Upper Freezer Drawer and Ice Bin

Craft Icemaker Installation is Complete

Optional: Run Test Mode

Run Test Mode on the icemaker to force the icemaker into a harvest mode. The test button is located on the bottom of the icemaker as shown below. Press and hold for 3-5sec or until icemaker begins to move. During test the icemaker will open and close (sometimes multiple times) and fill with water if working correctly:



Reminder: After installing your new craft icemaker, it can take 48 hours for the first batch of craft ice to harvest. After the initial harvest, the craft icemaker should cycle every 18-30 hours.

How to Remove Freezer Door

If you find any of the previous steps to be difficult then you may need more room to work. Removing the freezer door is an easy way to make more room for yourself. Please follow the steps below...

Step 1: Remove the freezer door bin by pulling it up and out:



Step 2: Remove the 2 Phillips screws.

There will be one located on each side of the railing close to the door:



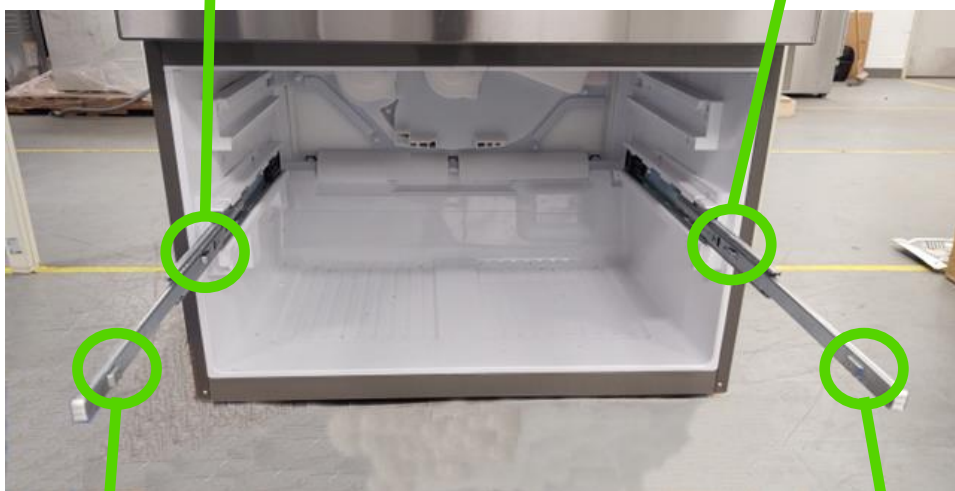
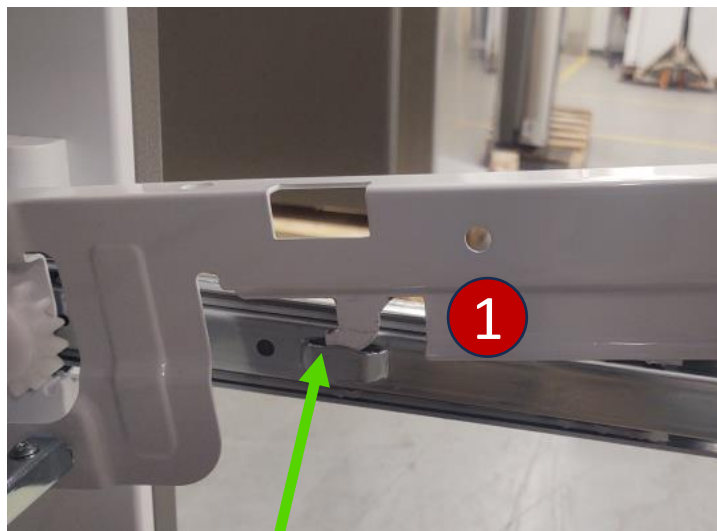
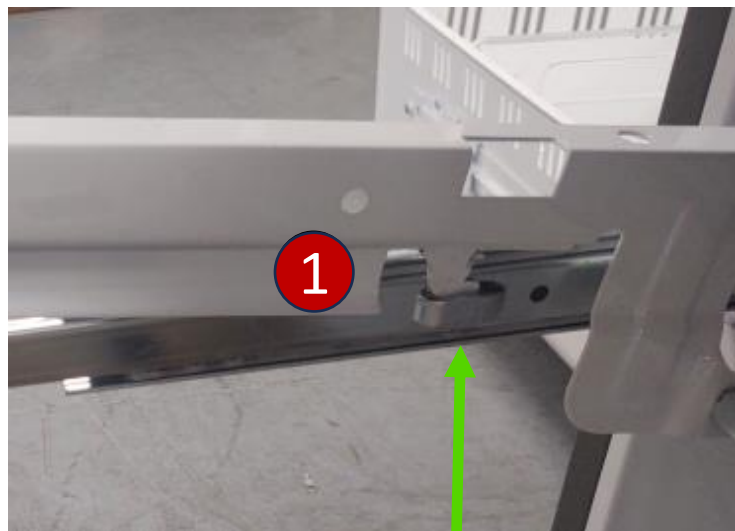
Step 3: Remove the door from the rails.

After removing the 2 screws pull straight up on the handle to remove the door and white railing. The metal, non painted railing, that is attached to the freezer liner will stay in place:



Step 4: Reinstall the Freezer door.

- Extend the cabinet railing fully out.
- Hold the door at a slight angle and install the rear hooks. **1**
- Install the front tabs into the railing. **2**



Step 5: Reinstall the two screws.

Now that the door and railing have been connected back together you can reinstall the 2 screws that were removed earlier, one screw on each side:



Step 6: Reinstall the Freezer door bin.

Reinstall the freezer door bin and make sure the door opens and closes correctly. You have successfully removed and reinstalled your freezer door:

