

Replacing your Craft Icemaker is very simple!

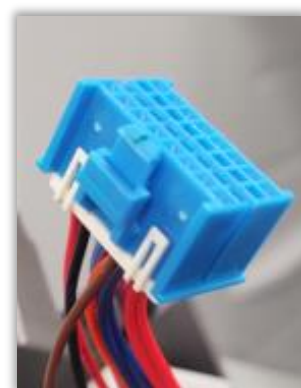
Only tool required is a #2 Phillips screwdriver.



- 1) With power removed from unit...Remove 2 screws that hold the craft icemaker assembly in place.



- 2) Unplug 1 wiring harness.



- 3) Install the new part.
(Plug in and reinstall the 2 screws)



For detailed Step-by-Step Instructions continue to next page.

How to Replace the Craft Icemaker in Side-by-Side Refrigerators

 **Tools Needed: #2 Phillips screwdriver.**



Step 1: Unplug the refrigerator from the wall.

Make sure power is disconnected from the refrigerator before continuing.



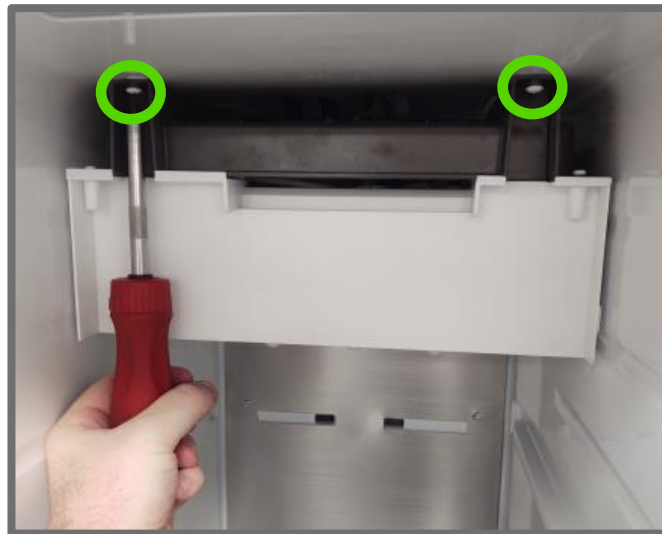
Step 2: Access the Craft Icemaker area

The Craft Icemaker is located in the top of the freezer section. Remove ice bin and top shelf to make room to work. Start by removing the decorative cover. It is held in with plastic tabs. Grab at the top and pull toward you and it will pop out of place and expose the Craft Icemaker:



Step 3: Remove the screws.

The Craft Icemaker is mounted to the ceiling of the freezer section on the left side. It is held in place with 2 Phillips head screws which will need to be removed first:



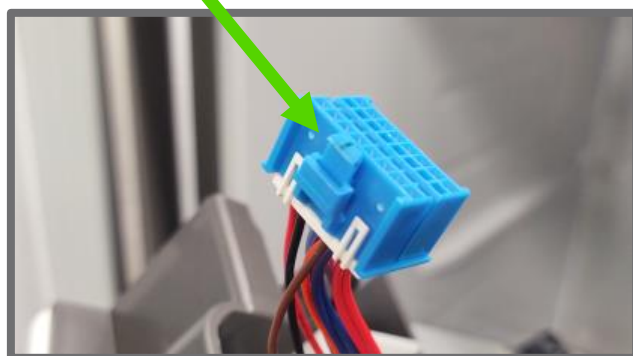
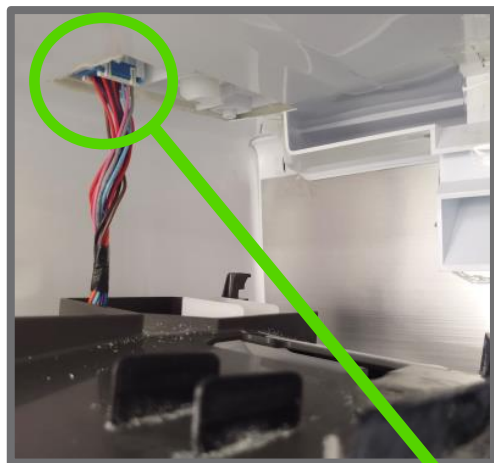
Step 4: Remove the Craft Icemaker.

After removing the 2 screws pull the icemaker toward you and down and the right side will rest on the upper shelf holder:



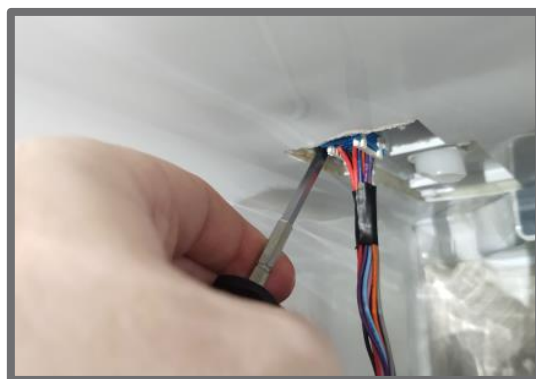
Step 5: Disconnect harness.

Disconnect the wiring harness on the left side of the icemaker. There is a locking tab on the left side of the connector that needs to be pressed to release the harness:



****Note:** The release tab is located on the left side of the connector and in some cases, there is not much room to get your finger on the tab to press it. In that case use a short flat blade screwdriver to press in on the tab so it will release from the connector:

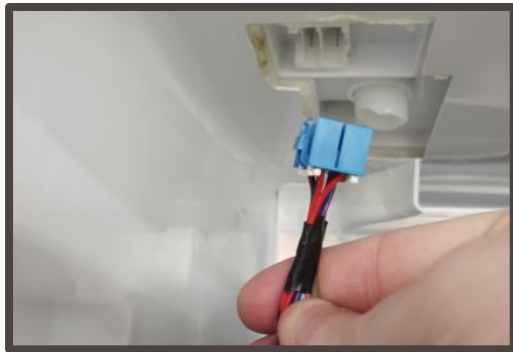
Once the harness is disconnected remove the Craft Icemaker from unit.



New Craft Icemaker Installation

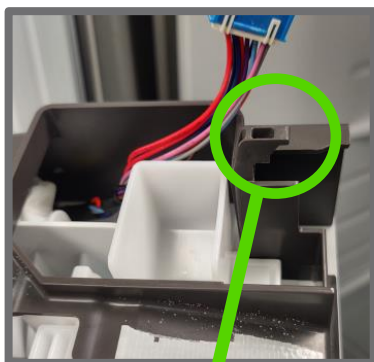
Step 1: Plug the harness in.

Plug the harness back into the connector in the ceiling of the freezer section. Make sure the release tab is facing the left side of the unit:



Step 2: Mount the Craft Icemaker.

Position the icemaker back into place. There is a hanger located on the top left side of the icemaker and another on the right side of the icemaker. Make sure the back of the icemaker is resting on these hangers:



Step 3: Position the Icemaker.

Once the icemaker is properly resting on the hangers slowly lift the front up until flush with the cabinet. *****Be Careful not to pinch the wires between the icemaker body and the liner. If you see this happening lower the front of the icemaker back down and reposition the wires so that they will not be pinched:**



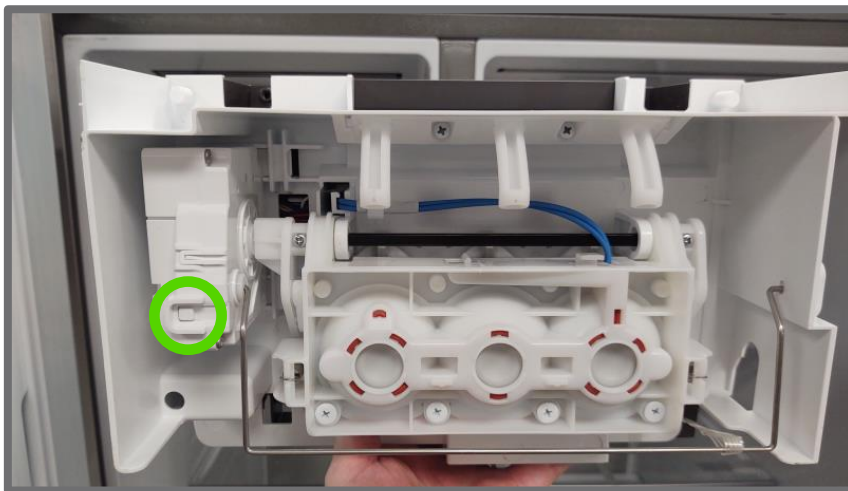
Step 4: Install the two screws.

With Icemaker in position and wires safely tucked away you can reinstall the 2 Phillips screws that secure the front of the icemaker to the liner:



Step 5: Test the Icemaker.

At this point you have reinstalled the Craft Icemaker. It is recommended to run a test cycle to make sure the Icemaker is functional. Plug the unit back in to power, if the icemaker has an on off switch make sure it is switched on, press and hold the test button 3-5sec or until icemaker begins to move. During test, the icemaker will open and close (sometimes multiple times) and fill with water if working correctly. The test button is located on the bottom left side of the icemaker:



Step 6: Replace the cover.

Snap the decorative cover back into place, all 4 corners should be secure if installed correctly, Simply press the cover toward the icemaker and you will hear it snap into place:

