

Replacing your In-Door Icemaker is very simple!

Only tool required is a #2 Phillips screwdriver.



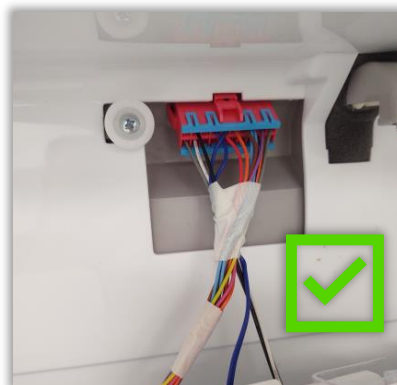
- 1) With power removed from unit....Remove 3 screws that hold the icemaker assembly in place.



- 2) Unplug 1 wiring harness.



- 3) Install the new part.
(Plug in and reinstall the 3 screws)



For detailed Step-by-Step Instructions continue to next page.

How to Replace the In-Door Icemaker Assembly for Side-by-Side Refrigerators



Tools Needed: #2 Phillips screwdriver.



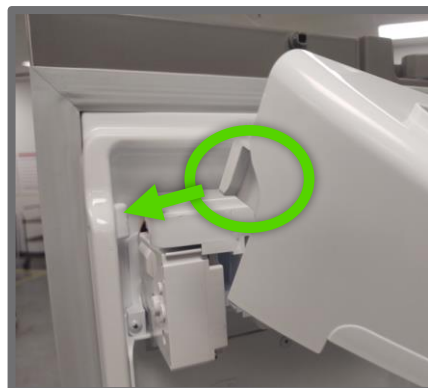
Step 1: Unplug the refrigerator from the wall.

Make sure power is disconnected from the refrigerator before continuing.



Step 2: Remove the Icemaker cover.

Remove the upper icemaker cover and the ice bin. To remove the upper cover push straight up on both sides and it will pop out of place. To remove the ice bin pull the bottom toward you and it will pop out of place:



Step 3: Remove the screws.

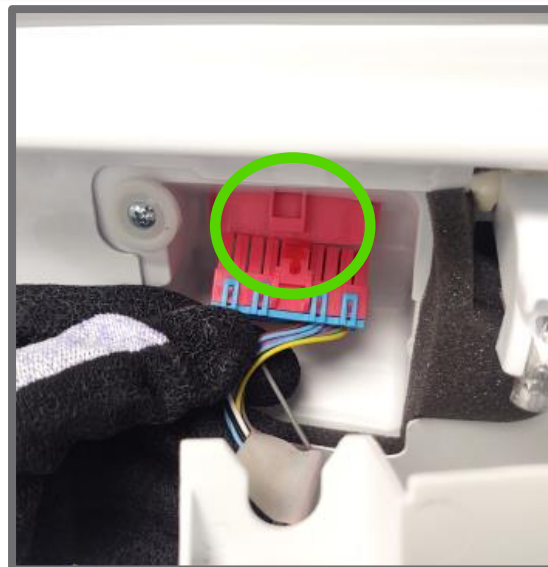


Step 4: Remove the Icemaker Assembly.

Pull the bottom of the icemaker assembly toward you and the whole assembly will move forward and drop down exposing the wiring harness at the top:



Step 5: Disconnect the connector.



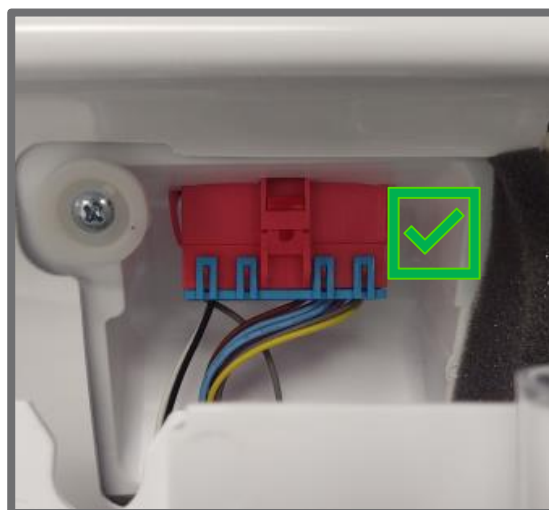
You have now successfully removed the old icemaker assembly from the unit...



Icemaker Assembly Installation

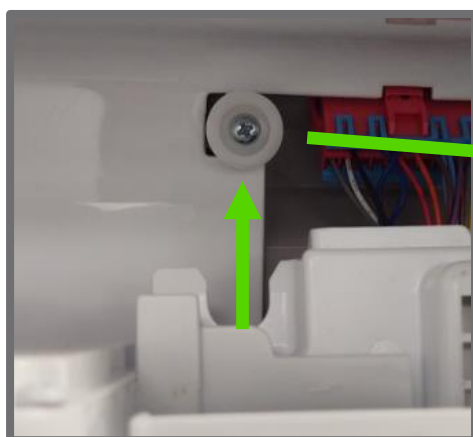
Step 1: Connect the connector.

Plug in the wiring harness making sure the locking tap is facing up, when the harness is fully seated you will hear an audible click:



Step 2: Mount the Assembly.

Push the icemaker assembly back into place. Notice that there is an alignment tab at the top. The U-Shaped cutout in the top of the icemaker will slide behind the tab. To install, push the icemaker up and back into place:



Step 3: Install the three screws.

Now that the icemaker is seated back into the door, line up the screw holes and insert the 3 screws that secure the icemaker assembly to the door:



Step 4: Test the Icemaker.

You have now successfully installed the Icemaker Assembly. After plugging the unit in you can turn the icemaker to the "ON" position and run test mode to make sure the icemaker cycles and moves.

****Note:** Most newer model Side-by-Side refrigerators have an on/off selection on the control panel. Older models will have a physical switch on the icemaker. The Test Button location is shown below (Location can vary by model). To activate test mode, hold the button 3-5 seconds or until the icemaker starts to rotate. During the test, the icemaker should cycle and fill with water:

